

C-179608

NUMBER



METRIC

2-179608-4 : 本 ☒

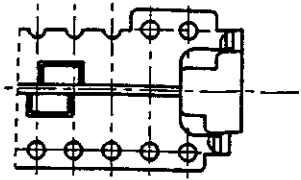
2-179608-4 : AS SHOWN

注記

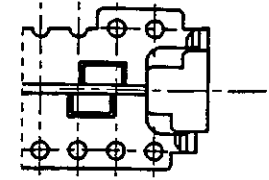
1. 適用コネクタ型番 : X-173977-X (リセ)

NOTE

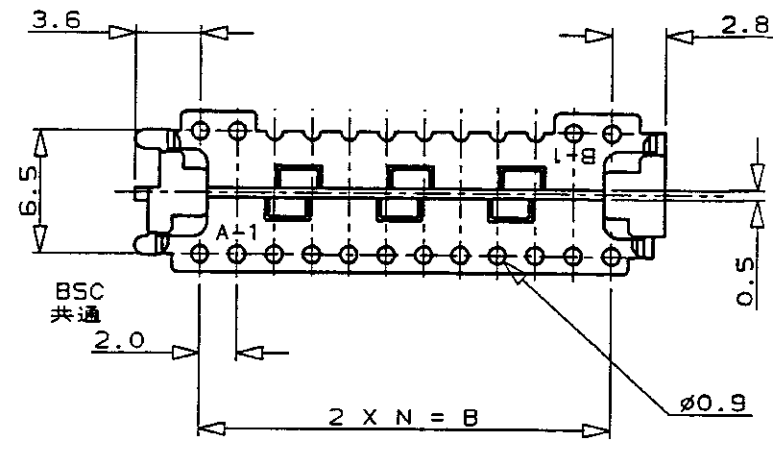
1. CONNECTOR P/N : X-173977-X(REC)



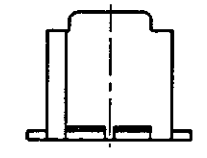
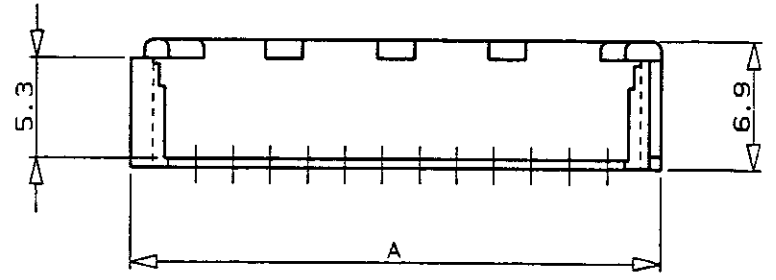
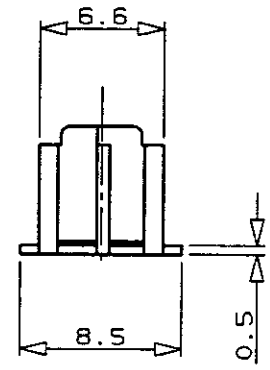
26P, 20P



28P, 22P, 16P



30P, 24P, 18P



34.3	28.0	14	30	3-179608-0
32.3	26.0	13	28	2- ↑ -8
30.3	24.0	12	26	2- -6
28.3	22.0	11	24	2- -4
26.3	20.0	10	22	2- -2
24.3	18.0	9	20	2- -0
22.3	16.0	8	18	1- -8
20.3	14.0	7	16	1-179608-6
A	B	N	POS 極数	型番 P/N

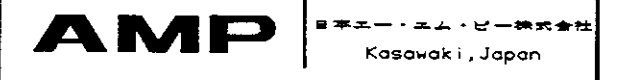
単位: 概 DIMENSIONS IN MM. DO NOT SCALE PRINT

PRINT DIST

AMP-J REV. 10/'93

A	REVISED	FJ00-4832-94	H.S.T.F.	7/25 '96
0	RELEASED	FJ00-0588-94	T.F.S.K.	5/18 '94
LTR	変更 (REVISION RECORD)	DR	CHK	DATE

Copyright ©1990年 日本エー・エム・ピー株式会社		Copyright ©1990 AMP (Japan), LTD. ALL RIGHTS RESERVED.	
電線断面積 (WIRE RANGE) # mm² (AWG #)	被覆外径 (INSULATION DIA.) # mmφ	名称 (NAME) CT ダブルローコネクタ用ホルダー (タイプ: CT MT 用) HOLDER FOR CT DOUBLE ROW CONN. (TYPE: CT MT TYPE)	
材料 (MATERIAL) 66NYLON 66ナイロン樹脂	色 (COLOR) NATURAL 自然色	一般公差 (GENERAL TOLERANCE) 10以下: ±0.2 10を超え30以下: ±0.25 30を超え100以下: ±0.3 角 度: ±3°	SIZE LOC 番号 (No.) B J C-179608
CHK. S.KUBOUCHI	APP. S.Kubouchi 7/25 '96	尺度 (SCALE) #	REV. A SHEET 1 OF 1



(CUSTOMER DRAWING) 参考 ☒ 面